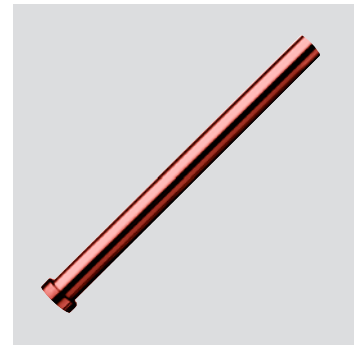


Z 492 / ...

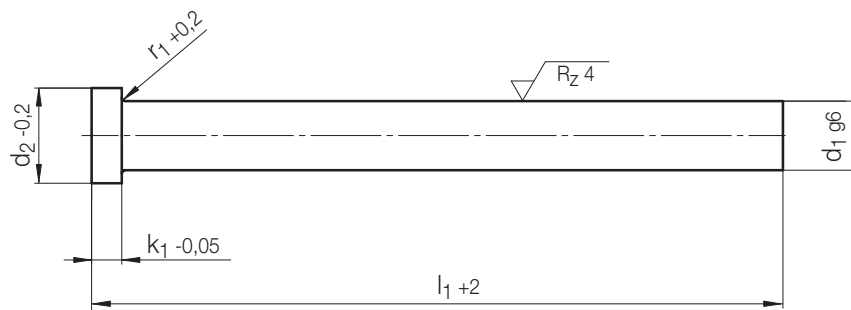
Kernstift
Core pin
Broche

Mat.: Spezial-Kupferlegierung, berylliumfrei
Special copper alloy, berylliumfree
Alliage de cuivre spécifique, exempt de béryllium

Härte / Hardness / Dureté: HB 200 ± 10
≈ DIN ISO 6751



2



k_1	r_1	d_2	d_1	l_1	Nr. / No.
3	0,3	8	4	160	Z 492 / 4 x 160
				250	250
5	0,5	12	6	160	Z 492 / 6 x 160
				250	250
		14	8	160	Z 492 / 8 x 160
				250	250
		16	10	160	Z 492 / 10 x 160
				250	250
7	0,8	18	12	160	Z 492 / 12 x 160
				250	250
		22	14	160	Z 492 / 14 x 160
				250	250
		16	160	160	Z 492 / 16 x 160
				250	250